

# Lamps & Magnifiers

FOR HEALTH & BEAUTY



# Content

4	About Us
6	Aura™ Ring Lamp (35450)
8	Gemini™ Floor Lamp (35350)
10	Slimline 3™ Table (35108) & Floor Lamp (35118)
12	Lumi™ Task Lamp (35500)
14	UnoLamps™ Clamp (N1410), Table (N1420) & Floor (N1430)
16	DuoLamps™ Clamp (N1510), Table (N1520) & Floor (N1530)
18	iQ™ Magnifier (25100)
20	Omega™ 7 Magnifier (25130)
22	Omega™ 5 Magnifier (25110)
24	Omega™ 3.5 Magnifier (25500)
26	MAG Lamp S™ Magnifier (N1200)
28	MAG Lamp XL™ Magnifier (N1300)
30	Magnificent Pro™ 3-in-1 Magnifying Lamp (25090)
32	Halo™ Table Magnifier (25200) & Halo Go™ Rechargeable Magnifier (25201)
34	Foldi Go™ Rechargeable Table Lamp (35050)
36	Smart Go™ Rechargeable Lamp (N1370)
38	YoYo™ Magnifier (N1350)
40	Electra™ Floor Lamp (35231)
42	TwoSun™ Light Therapy & Task Lamp (36201)
44	TriSun™ Light Therapy & Desk Lamp (36401)
46	Cometa™ Table (35651) & Floor Lamp (35851)
48	Accessories: Slimline Table Base (52107) & Magnifying Arm (91707)
49	Accessories: Professional Floorstand (53060) & Professional Table Base (52080)
51	Customer Support



## Transform your work with the right light

Our range of lamps and magnifiers have been specifically designed for the needs of health and beauty professionals so you can see every hair, shade or lash with clarity and comfort and illuminate your area of work without shadows.

We craft our products to ensure the light they emit resembles natural daylight as much as possible. The brightness is optimised for colour tone differentiation, the light is diffused equally and our lamps can be positioned effortlessly. Our inspiration comes from our customers and we love hearing how our lamps have enabled them to work more precisely, accurately and creatively.

Bring daylight indoors with our beautifully designed, high-performance products. We hope you love your Daylight lamp as much as we do.



# About Us

**We create specific task lighting solutions.**

Our lamps are functional and specially designed for the task at hand and have been continuously improved over the years. All our lamps remain true to three guiding principles:



**LIGHT QUALITY**

Natural daylight combined with the right brightness and spread of light



**ERGONOMICS**

Positioning the lamp exactly where the light is needed



**DESIGN**

We create contemporary lamps that look and work perfectly in your home or professional environment





Removable mobile  
phone holder  
& USB port



Flat & stable base



Lightweight & folds into  
its carry-bag

# Aura™

## RING LAMP

(35450)

**See every shade and show off your work.**

Ring lights are the ideal tool for a professional photo finish, social media streaming and seeing every shade true to colour at any time of day or night. Showcase your talent using the removable mobile phone holder so you can easily snap, film and share those stunning shots, wherever you are. Take the lightweight Aura to any location – simply pack and fold into its carry-bag for fuss-free transportation.

### FEATURES

- CRI 90+
- Continuous dimmer switch
- Colour temperature: 6,000K
- Weight: 0.9kg
- Cable length: 2.4m
- Removable mobile phone holder & USB port



2,100  
LUMENS



23W ENERGY  
CONSUMPTION



4,500 LUX  
AT 30CM



25,000 LED  
LIFE HOURS





Removable mobile  
phone holder  
& USB port



Flat & stable base



Lightweight & folds into  
its carry-bag

# Gemini™

## FLOOR LAMP

(35350)

### Flexibility meets stability and portability.

Gemini keeps cool for long periods of time, making it the perfect companion for busy health and beauty professionals working back-to-back appointments. Use the flexible arms to reduce shadows and easily transport the sturdy, lightweight Gemini with you when visiting clients. Simple to disassemble and place in its carry-bag, shine the best light on your work from any location and capture your talent with ease using the removable phone holder.

#### FEATURES

- 4 brightness levels
- Colour temperature: 6,000K
- Maximum reach: 44cm
- Cable length: 3.5m
- Removable mobile phone holder & USB port



1,400  
LUMENS



23W ENERGY  
CONSUMPTION



4,500 LUX  
AT 30CM



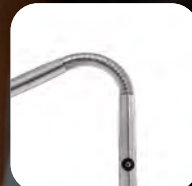
25,000 LED  
LIFE HOURS







Elegant stable  
floor base



Flexible joints for  
perfect positioning



Aluminium shade with  
full length diffuser

# Slimline™

## TABLE LAMP

(35108)

### Your new best friend for dazzlingly detailed nail designs.

This sleek and stylish lamp is a favourite with manicurists and pedicurists worldwide. Create enviable and intricate nail art with Slimline's bright light, flexible design and long reach, allowing for clear, even light distribution across an increased area.

#### FEATURES

- 4 brightness level 3,000 - 2,000 - 1,500 - 750 Lux
- Colour temperature: 6,000K
- Maximum reach: 73cm
- Cable length 2.4m

#### ACCESSORIES AVAILABLE

- Slimline Table Base (52107)
- Magnifying Arm (91707)



1,065  
LUMENS



13W ENERGY  
CONSUMPTION



3,000 LUX  
AT 30CM



25,000 LED  
LIFE HOURS



## FLOOR LAMP

(35118)

### The perfect blend of functionality, ergonomics and an unrivaled quality of light.

Adapt brightness to your task with the four-step dimmer while flexible joints allow for accurate positioning. Elegant and durable, the Slimline Floor allows you to work for extended periods with clarity and comfort.

#### ACCESSORIES AVAILABLE

- Magnifying Arm (91707)



Magnifier sold separately



Wide shade for  
large areas



Adjustable head  
and arm



Space saving  
table clamp

# Lumi™

## TASK LAMP

(35500)

### Make your work shine bright with the Lumi Task Lamp.

Adjust the wide shade vertically, horizontally and laterally to optimise the position for a range of tasks. 88 high quality, powerful LEDs illuminate a wide area, enabling you to differentiate each shade and see delicate details clearly.

#### FEATURES

- 2 brightness levels
- Wide shade for an even spread of light over a very large area
- Colour temperature: 6,000K

#### ACCESSORIES AVAILABLE

- Professional Floorstand (53060)
- Professional Table Base (53080)



1,320  
LUMENS



15W ENERGY  
CONSUMPTION



3,800 LUX  
AT 30CM



25,000 LED  
LIFE HOURS





High light output  
over a large area



Flat & stable base



Touch switch dimmer  
with 4 brightness  
levels

# UnoLamps™

CLAMP  
(N1410)

TABLE  
(N1420)

FLOOR  
(N1430)

**Get stunning results with the right light.**

From eyelash extensions to luxury manicures, the right lighting can make a significant difference to your work. Choose from either a floor, desk, or clamp base to best suit your needs.

## FEATURES

- 4-step touch dimmer
- Daylight 6,000K
- Flexible arm



400  
LUMENS



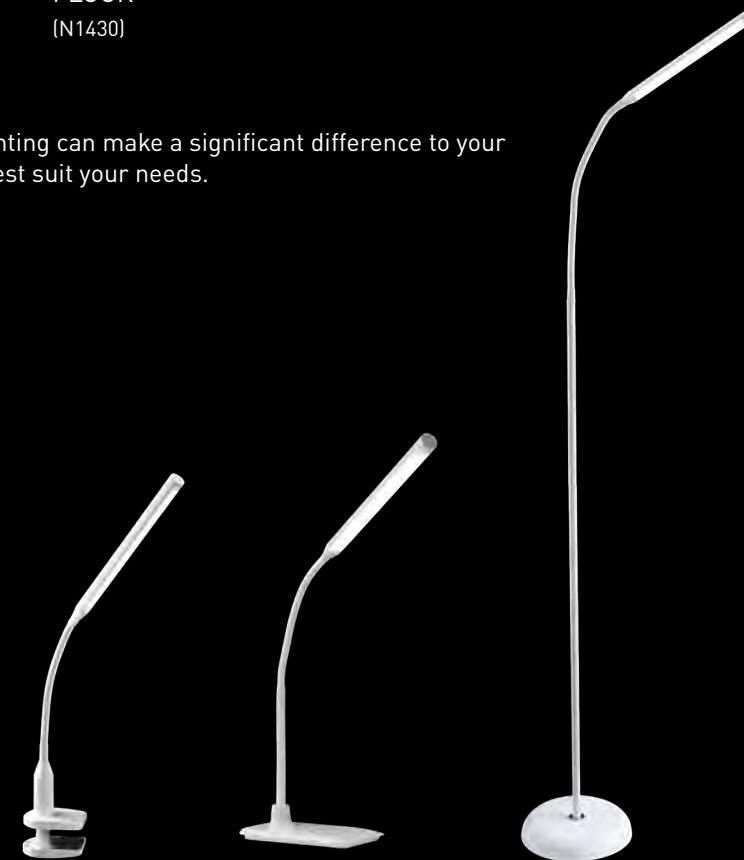
6W ENERGY  
CONSUMPTION



1,145 LUX  
AT 30CM



25,000 LED  
LIFE HOURS







Dual shade increases the illuminated workspace



Flat & stable base



56 high quality bright LEDs provide accurate colour matching

# DuoLamps™

CLAMP  
(N1510)

TABLE  
(N1520)

FLOOR  
(N1530)

## Twice the light for your treatments.

With two light sources, the DuoLamp fully illuminates the workspace of health and beauty professionals, providing bright, evenly distributed light for a variety of treatments. Our lighting is designed to be as close to natural light as possible, so you can be confident that you can see every detail and provide the best treatment possible. Choose from either a floor, desk, or clamp base to best suit your needs.

### FEATURES

- Two independent shades for double the light output
- 4-step individual touch dimmer
- Daylight 6,000K
- Flexible arm



700  
LUMENS



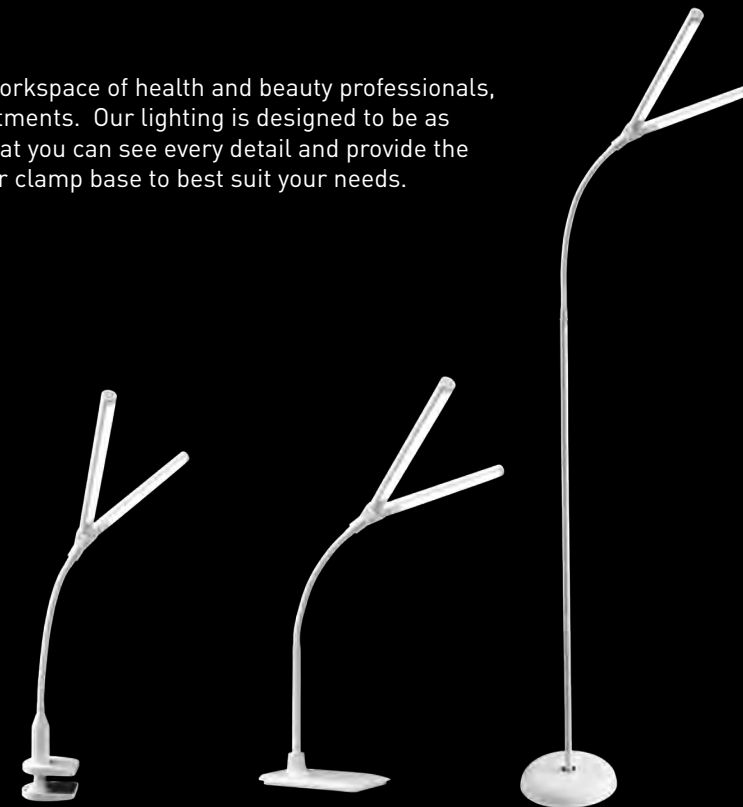
10W ENERGY  
CONSUMPTION  
(13.5W FOR THE  
N1530)



2,090 LUX  
AT 30CM



25,000 LED  
LIFE HOURS





12 diopter (4.0X) swing  
arm lens included



Free motion  
head joint



4 brightness  
levels

# iQ™

## MAGNIFIER

(25100)

### Approach intricate tasks with ease.

A large and lightweight lens combined with a long reach enables you to perform detailed work with clarity and comfort. The magnifying head can be moved effortlessly to hold any position and the arms are laterally protected for easy cleaning. For a closer focus, use the 12 diopter (4.0X) magnification lens mounted on a swing arm. Includes removable lens protector.

#### ACCESSORIES AVAILABLE

- Acrylic lens with anti-scratch coating Ø 17.5cm
- Covered arms with internal springs
- Long reach 118cm
- Removable lens protector

#### ACCESSORIES AVAILABLE

- Professional Floorstand (53060)
- Professional Table Base (53080)



1,065  
LUMENS



12.5W ENERGY  
CONSUMPTION



3,000 LUX  
AT 30CM



25,000 LED  
LIFE HOURS





Covered arms with  
internal springs



Adjustable head joint  
with wing nut



4 brightness levels

# Omega 7™

MAGNIFIER

(25103)

**The Omega 7 is a modern, ergonomically designed magnifying lamp.**

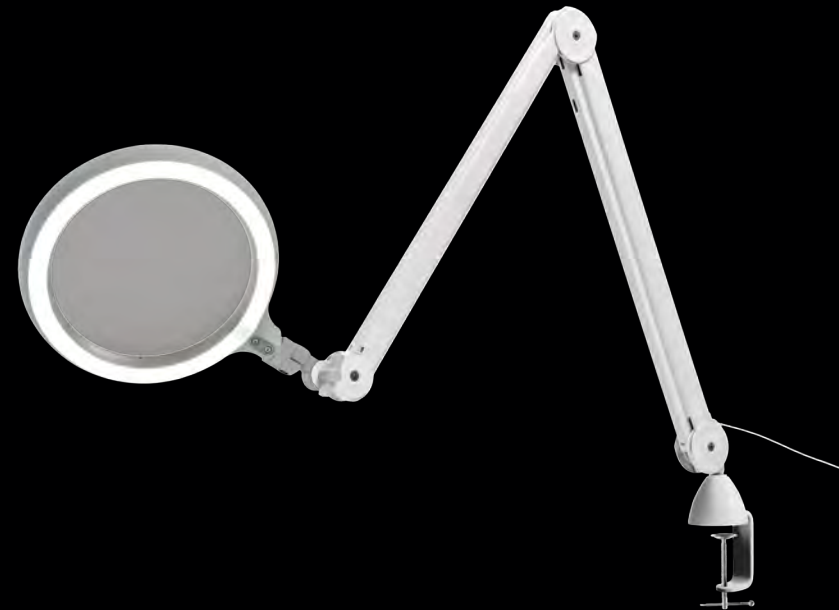
A large 17.5cm, 3 diopter (1.75X), lightweight acrylic lens is combined with high power LEDs with 4 brightness levels for clear viewing. The internal spring arm allows for accurate positioning and lateral protections enable easy cleaning. Enjoy an aesthetically pleasing white and grey finish to fit perfectly in your professional environment.

## FEATURES

- 17.5cm acrylic lens with anti-scratch coating
- Lens magnification: 3 diopters (1.75X)
- Covered arms with internal springs
- Adjustable head joint with wing nut
- 4 brightness levels
- Long reach: 118cm

## ACCESSORIES AVAILABLE

- Professional Floorstand (53060)
- Professional Table Base (53080)



814  
LUMENS



12.5W ENERGY  
CONSUMPTION



6,300 LUX  
AT 15CM



25,000 LED  
LIFE HOURS



Adjustable head joint  
with wing nut



3 diopter & 5  
diopter glass  
lenses included



Free motion arm for  
perfect positioning

# Omega 5™

MAGNIFIER  
(25110)

## Change the lens to suit your task.

Powerful and adaptable, the Omega 5 Magnifier comes with a 3 diopter (1.75X) magnification lens and an additional 5 diopter (2.25X) lens so you can switch the lens to suit your task. Adjust brightness to your needs with 4 brightness settings and enjoy an aesthetically pleasing white and grey finish to fit perfectly in your professional environment.

### FEATURES

- 3 diopter (1.75X) and 5 diopter (2.25X) lenses included
- Adjustable head joint with wing nut
- 12.7cm glass lens
- Long reach: 106cm
- 4 brightness levels

### ACCESSORIES AVAILABLE

- Professional Floorstand (53060)
- Professional Table Base (53080)



550  
LUMENS



11W ENERGY  
CONSUMPTION



5,500 LUX  
AT 15CM



25,000 LED  
LIFE HOURS





4 brightness levels



Flexible, long reach arm



Removable, slim profile clamp

# Omega 3.5™

MAGNIFIER

(25500)

Perfect your pedicures with this portable, powerful and durable magnifier.

Closely inspect your area of work with optimum illumination using this compact and lightweight magnifying light. Bright daylight LEDs circle the lens and are easily adapted to different tasks with a choice of 4 brightness levels. Smoothly position the 9cm lens with 5 diopter (2.25X) magnification exactly where needed using the adjustable arm and rotating head joint. Flexible and functional, enjoy a quick and hygienic clean-up thanks to the silicon covered arm.

## FEATURES

- 9cm acrylic lens
- Lens magnification: 5 diopters (2.25X)
- Lens cover included
- Long reach arm: 75cm with two flexible sections
- Carry bag included
- Removable, slim profile clamp



Carry-bag with shoulder strap included



5,570  
LUMENS



6.5W ENERGY  
CONSUMPTION



7,000 LUX  
AT 15CM



25,000 LED  
LIFE HOURS



Easily adjustable  
spring arm



13cm glass lens with 3  
diopter (1.75X) magnification



Space saving  
table clamp

# MAG Lamp S™

MAGNIFIER

(N1200)

**Aesthetically and ergonomically designed for detailed tasks.**

With a modern and aesthetically pleasing design, the MAG Lamp S is your ideal companion for carrying out detailed and intricate work while preventing eyestrain. With 2 brightness levels, a 13cm glass lens with 3 diopter (1.75X) magnification and adjustable spring arm, you can position this magnifier exactly where you need it and choose the most suitable brightness setting for your task at hand.

## FEATURES

- Modern and attractive slim design
- Bright daylight LEDs
- 2 brightness levels
- Maximum reach 110cm

## ACCESSORIES AVAILABLE

- Professional Table Base (52080)
- Professional Floorstand (53060)



406  
LUMENS



12W ENERGY  
CONSUMPTION



5,300 LUX  
AT 15CM



25,000 LED  
LIFE HOURS





Easily adjustable  
spring arm



17.7cm glass lens  
with 3 diopter (1.75X)  
magnification



Space saving  
table clamp

# MAG Lamp XL™

MAGNIFIER  
(N1300)

**Your ideal companion for detailed tasks or treatments.**

With a modern and aesthetically pleasing design, the MAG Lamp XL is your ideal companion when carrying out detailed tasks or treatments. With 2 brightness levels, a 17.7cm glass lens and adjustable spring arm, you can position this magnifier exactly where you need it and choose the most suitable brightness setting for your task at hand.

## FEATURES

- Modern and attractive slim design
- 17.7cm glass lens with 3 diopter (1.75X) magnification
- Bright daylight LEDs
- 2 brightness levels
- Easily adjustable spring arm
- Maximum reach 108cm

## ACCESSORIES AVAILABLE

- Professional Table Base (52080)
- Professional Floorstand (53060)



770  
LUMENS



11.5W ENERGY  
CONSUMPTION



5,300 LUX  
AT 15CM



25,000 LED  
LIFE HOURS

# Magnificent Pro™

3-IN-1 MAGNIFYING LAMP

(25090)



**This adaptable magnifying lamp is ideal for all types of detailed work.**

The 3-in-1 versatility of the Magnificent Pro allows it to be used as a Floor Magnifying Lamp, a Table Magnifying Lamp and a Task Lamp. Its large 13cm (1.75X) semi-rimless magnifying lens gives you a clear view of your work and the magnetically attached cover transforms the magnifier into an elegant task lamp. The daylight LEDs provide high contrast and accurate colour matching, making it easier and less tiring to work while seeing detail clearly.

## FEATURES

- 3-in-1 Magnifying Lamp: Floor Magnifier, Table Magnifier and Task Lamp
- Magnetically attached lens cover
- 3 diopter (1.75X) semi-rimless magnifying lens
- Large 13cm diameter lens
- Daylight 6,000K and 95+ CRI to see colours accurately
- 3 brightness levels so you can adjust the brightness to your task at hand
- Flexible arm directs the magnifier head exactly where you need it



1,065  
LUMENS



13W ENERGY  
CONSUMPTION



3,000 LUX  
AT 30CM



25,000 LED  
LIFE HOURS



Daylight LEDs  
provide true colour  
matching



Large 13cm (1.75X)  
semi-rimless lens



Magnetic lens cover





Compact design  
folds flat



5 diopter (2.25X)  
magnification lens



3 brightness levels

# Halo™

## TABLE MAGNIFIER

(25200)

### Plug in and power your projects, at home or away.

Small but strong, the Halo Table Magnifier is perfect for projects requiring extra attention. LEDs circle the magnification lens for an even distribution of light and accurate colour matching while the powerful lens provides optimum magnification of 5 diopters (2.25X). Easily portable thanks to its foldable design and lens cover, carry this compact companion with you and plug in whenever needed.

#### FEATURES

- Daylight 6,000K
- 3 brightness levels
- 9cm diameter lens
- Weight: 0.7kg
- Colour white/silver
- Cable Length 2m
- Colour temperature 6,000K



315  
LUMENS



6W ENERGY  
CONSUMPTION  
(5W FOR THE  
25201)



4,000 LUX  
AT 15CM



25,000 LED  
LIFE HOURS

# Halo Go™

## RECHARGEABLE MAGNIFIER

(25201)

### No need for a power source, use your Halo Go wherever you are.

With a full charge, the USB rechargeable battery provides up to 8 hours of continuous brightness and uniform lighting. Carry this compact companion and use it anywhere thanks to its foldable design and lens cover. Focus on the finest details with 5 diopter (2.25X) magnification and a 12 diopter (4.0X) inset lens. No power source needed.

#### FEATURES

- Rechargeable lamp with up to 8 hours of consistent and continuous brightness
- Daylight 6,000K
- 2 brightness levels
- 9cm diameter lens
- Battery level indicator
- USB adapter and cable included
- Weight: 0.75kg



# Foldi Go™

RECHARGEABLE TABLE LAMP

(35050)



**No plug sockets? No problem. For sturdy, sizeable and adjustable lighting wherever you are, simply fold and go.**

Supplied with a padded, protective carry case, the rechargeable Foldi Go can easily be carried around without weighing down your bag or kit and extends to be a full-size desk lamp. Perfect for mobile nail technicians and beauty procedures. Enhance your creations and capture the magic in your work with the Foldi Go.

## FEATURES

- Rechargeable 'full size' desk lamp supplied with compact carry case
- Up to 8 hours of consistent and continuous brightness
- Long reach, fully adjustable arm and rotatable shade
- Monitor the charge level at a glance with the battery power level indicator
- High quality daylight LEDs with choice of 4 brightness levels
- 95+ CRI to see colours accurately at any time of day or night
- Ideal for moving around the house or using on the go



Battery power level indicator



Supplied with carry case



Fully adjustable arm and rotating shade



340  
LUMENS



5W ENERGY  
CONSUMPTION



1,300 LUX  
AT 30CM



25,000 LED  
LIFE HOURS







Battery charge level  
indicator lights



3-step brightness  
dimmer



Supplied with  
USB cable

# Smart Go™

RECHARGEABLE LAMP  
(N1370)

## Lightweight lighting to make your work shine bright.

Eliminate extra wires on your desk, travel from client to client without carrying heavy lighting, and see colours clearly and accurately with the Smart Go Rechargeable Lamp. Portable, lightweight, and rechargeable. Reduce eye strain and bring a touch of luxury to everyday tasks with the stylish satin gold finish. Recharge the Smart Go with the supplied cable and any USB output.

### FEATURES

- Lightweight and portable
- Elegant and aesthetically pleasing design
- Unobtrusive outline that doesn't take up space on your desk or side table
- 95+ CRI to provide true colour matching and better contrast
- Up to 6 hours battery run time
- USB cable included
- Charge time: 7.5 hours



120  
LUMENS



5W ENERGY  
CONSUMPTION



630 LUX  
AT 30CM



25,000 LED  
LIFE HOURS



# YoYo™

MAGNIFIER  
(N1350)

**Petite and portable, this compact companion is perfect for nails on the go.**

With an 8 diopter (3X) magnification lens and 3 bright daylight LEDs, the YoYo Magnifier can be easily transported for detailed work and accurate colour tone differentiation.

## FEATURES

- Compact foldable pocket LED magnifier
- 5.5cm lens - Magnification 8D (3.0X)
- Ideal to use when out and about
- Requires 3 x AAA batteries *(not included)*



5.5cm lens -  
Magnification 8D  
(3.0X)



3 bright LEDs



Wrist strap included



12  
LUMENS



0.3W ENERGY  
CONSUMPTION



380 LUX  
AT 15CM



25,000 LED  
LIFE HOURS





# Electra™

## FLOOR LAMP

(35231)



Change colour temperature at the touch of a button with the satin black Electra.

Unobtrusive, flexible and easy to use, the beautiful black satin Electra is easy to position so you can carry out your work in comfort, perfect for tattoo artists. The anti-glare shade ensures that the light will be directed to your task at hand without disturbing anyone else in the room. Simply change the colour temperature to cool light or warm light to create a relaxing atmosphere.

### FEATURES

- Beautiful black satin finish floor lamp
- Choice of 3 colour temperatures- Daylight 6,000K, Cool light 4,000K, or Warm light 2,700K
- Slim and unobtrusive design
- Flexible arm and rotating shade for perfect positioning
- Easily adjust the bright and wide spread of light using the tactile continuous dimmer switch
- Anti-glare shade ensures light is directed away from your eyes and focused where you want it
- 95+ CRI for exceptional clarity and accurate colours at any time of day or night

### ACCESSORIES AVAILABLE

- Magnifying Arm [91707]



800  
LUMENS



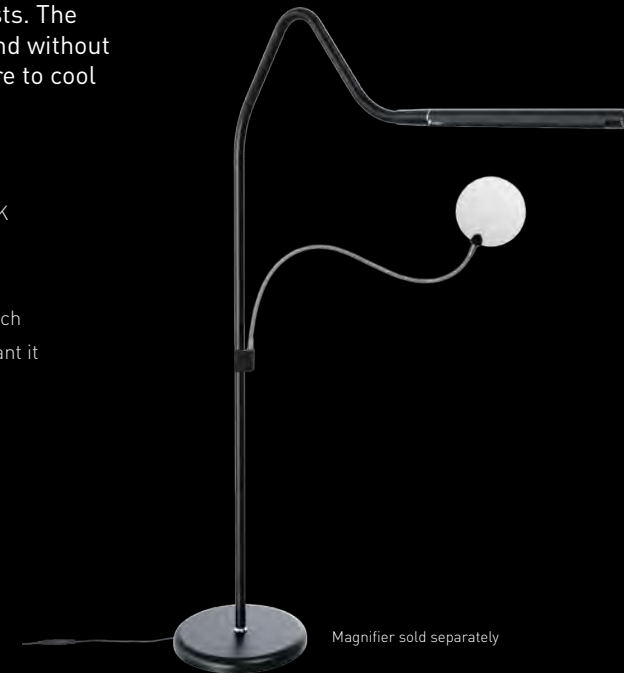
13W ENERGY  
CONSUMPTION



3,000 LUX  
AT 30CM



25,000 LED  
LIFE HOURS



Magnifier sold separately



Easy to operate



Anti-glare shade



Flexible arm



Second panel for  
light therapy



Easy Twist Shade™ for  
accurate light positioning



Stable base

# TwoSun™

## LIGHT THERAPY & TASK LAMP

(36201)



### Effortlessly alternate between light therapy mode and task lamp mode.

When you're not using the TwoSun as an SAD light, it's ideal for illuminating your space and reducing eyestrain during beauty treatments. The Easy Twist Shade™ allows the light to be positioned and directed exactly where you need it while the brightness can be adjusted using the tactile 3-step dimmer button. The daylight LEDs provide high contrast and accurate colour matching. Ideal for light therapy, morning routines, everyday tasks, desk work and reading.

#### FEATURES

- Lightweight and portable SAD light and task lamp
- Tested to Medical Safety Standard EN/IEC 60601-1
- Easily alternate between light therapy mode and task lamp mode
- Light therapy mode: 10,000 lux at 10cm with automatic 30 minute off timer
- Easily adjust the brightness level with the 3-step dimmer button
- 95+ CRI provides optimum light therapy & ensures accurate colour matching
- Light, portable and ergonomically designed to be easily carried with one hand



800  
LUMENS



13W ENERGY  
CONSUMPTION



10,000 LUX  
AT 10CM



25,000 LED  
LIFE HOURS





# TriSun™

## LIGHT THERAPY & DESK LAMP

(36201)



**Effortlessly alternate between light therapy mode and task lamp mode along with choice of colour temperature.**

The highly functional TriSun can be customised to your needs; simply adjust the brightness level and colour temperature to your liking, move the arm and shade into the perfect position, and charge your phone whenever needed using the built-in USB port. With a large 16.5cm diameter shade, you can be sure of an exceptional light quality and shadow-free, evenly diffused light. The daylight LEDs that provide high contrast and accurate colour matching. Ideal for light therapy, office and desk work, morning routines, video calls, content creation and reading.

### FEATURES

- SAD lamp & desk lamp with 3 colour temperature options
- Effortlessly alternate between light therapy mode and desk lamp mode
- Choice of Daylight 6,000K, Cool light 4,000K and Warm light 2,700K in both modes
- Tested to Medical Safety Standard EN/IEC 60601-1
- Light therapy mode: 10,000 lux at 15cm with automatic 30 minute off timer
- Easily adjust the brightness level with the tactile dimmer switch
- Large 16.5cm diameter shade enables exceptional illumination and spread of light
- Adjustable arm and shade for perfect positioning
- 95+ CRI provides optimum light therapy & ensures accurate colour matching



1,000  
LUMENS



14W ENERGY  
CONSUMPTION



10,000 LUX  
AT 15CM



25,000 LED  
LIFE HOURS



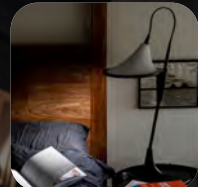
3 colour  
temperatures



Built-in USB port



Large 16.5cm  
diameter shade



Ray Technology™



Ambient light



Adjustable shade height

# Cometa™

TABLE  
(35651)

FLOOR  
(35851)

## A light range unlike any other.

With an elegant and contemporary design, Cometa Table emits a focused task light as well as a warm ambient light. The task light utilises our innovative Ray Technology™ which enables light to be directed forward without angling the lamp so you can craft or read without disturbing anyone else in the room. Choose colour temperature when using the task light and add ambience to your room with the soft glow from the illuminating shade.

### FEATURES

- Eliminate glare and prevent shadows with our innovative Ray Technology™
- Choose from 2 colour temperatures when using the task light - daylight (6,000K) and warm light (2,700K) - perfect for reading and detailed tasks or enjoying a softer light
- Add ambience to your room with the soft glow from the illuminating shade
- Variable brightness for the perfect light intensity
- Daylight LEDs with 95+ CRI enable you to see colours perfectly at any time of day or night
- **Cometa Table (35651):** Built-in USB port enables convenient charging of your phone and other devices
- **Cometa Floor (35851):** Effortlessly position the light where you need it by rotating the base



800  
LUMENS



22W ENERGY  
CONSUMPTION



7,000 LUX  
AT 30CM



25,000 LED  
LIFE HOURS





## Slimline Table Base

[52107]

**This elegant Table Base is designed to compliment the Slimline Table Lamp.**

With the same brushed steel finish, this is an ideal accessory to enable the Slimline Table Lamp to be moved away from the table edge and placed where required. It is also useful when the lamp cannot be attached to a table with its clamp. This base is not compatible when the Magnifying (91707) is attached to the Slimline Table Lamp (35108).

### COMPATIBLE WITH

- Slimline™ Table Lamp (35108)



## Magnifying Arm

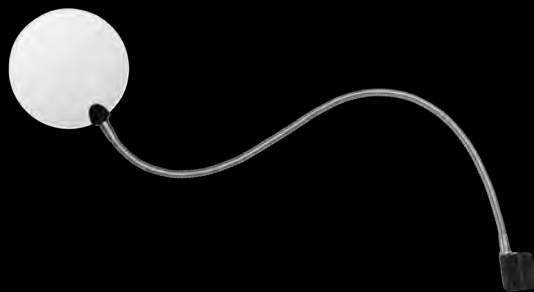
[91707]

**Turn your Slimline or Electra into a magnifier.**

Clip this magnifying arm onto the Slimline or Electra pole for a sturdy tool when creating detailed work. The 13cm diameter rimless lens with 3 diopter (1.75X) magnification and its flexible arm allows for easy positioning.

### COMPATIBLE WITH

- Slimline™ Table Lamp (35108)
- Slimline™ Floor Lamp (35118)
- Electra™ Floor Lamp (35231)



## Professional Floorstand

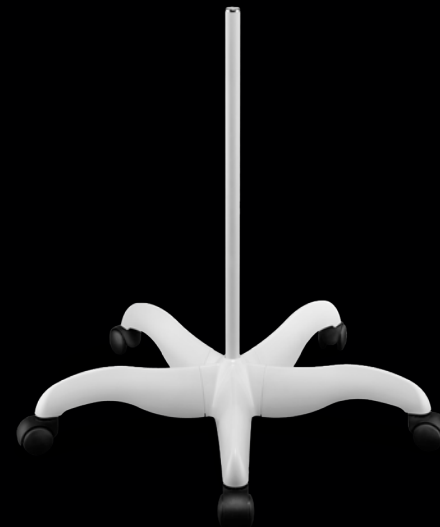
[53060]

**High quality 5 spoke floorstand.**

A unique and robust design enhances stability and supports the heaviest Daylight lamps and magnifiers. Easy to assemble, the floorstand glides smoothly across any surface.

### COMPATIBLE WITH

- MAG Lamp S™ Magnifier (N1200)
- MAG Lamp XL™ Magnifier (N1300)
- Lumi™ Task Lamp (35500)
- iQ™ Magnifier (25100)
- Omega™ 7 Magnifier (25130)
- Omega™ 5 Magnifier (25110)



## Professional Table Base

[52080]

**This heavy duty table base supports all Daylight lamps and magnifiers.**

Easy to assemble, this durable table base enhances stability and supports the heaviest Daylight products.

### COMPATIBLE WITH

- MAG Lamp S™ Magnifier (N1200)
- MAG Lamp XL™ Magnifier (N1300)
- Lumi™ Task Lamp (35500)
- iQ™ Magnifier (25100)
- Omega™ 7 Magnifier (25130)
- Omega™ 5 Magnifier (25110)



# Customer Support

Our customers are at the heart of what we do and our dedicated Customer Service team is here to answer any questions you may have as rapidly as possible. We love hearing from our customers and learning about their experiences with our products so don't hesitate to get in touch with us. We look forward to hearing from you.



## GUARANTEE

We aim to provide the highest quality products that exceed our customers' expectations. All Daylight products are guaranteed against manufacturing faults for 2 years from the date of purchase.

**For full terms and conditions visit: [daylightcompany.com/terms-conditions](https://daylightcompany.com/terms-conditions)**

The Daylight Company Ltd. reserves the right to modify or change any of the specifications listed without prior notice.  
Copyright © The Daylight Company Ltd. 2023



The background of the entire page is a photograph of two women sitting at a table, working on jewelry. One woman is holding a piece of jewelry, and the other is assisting. A long, thin, flexible lamp (Soundlight) is positioned over the table, illuminating their work. The scene is dimly lit, emphasizing the light from the lamp.

# soundlight

Tageslichtleuchten - Ihren Augen zuliebe

soundlight Andi Kocher  
Vogesenstr. 58  
CH-4106 Therwil  
[www.daylight-leuchten.ch](http://www.daylight-leuchten.ch)

Tel/Fax +41 61 75 113 75  
Mobil +41 79 674 78 33  
[verkauf@soundlight-kocher.ch](mailto:verkauf@soundlight-kocher.ch)

HB20231302 UK



daylight

when light matters